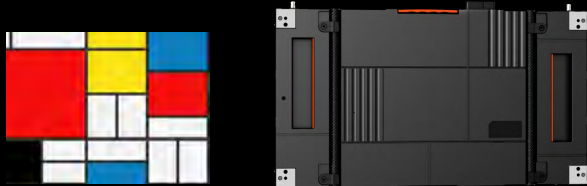


PLANAR iHUB SERIES
ALL-IN-ONE LED DISPLAY

Product Overview - June 2022

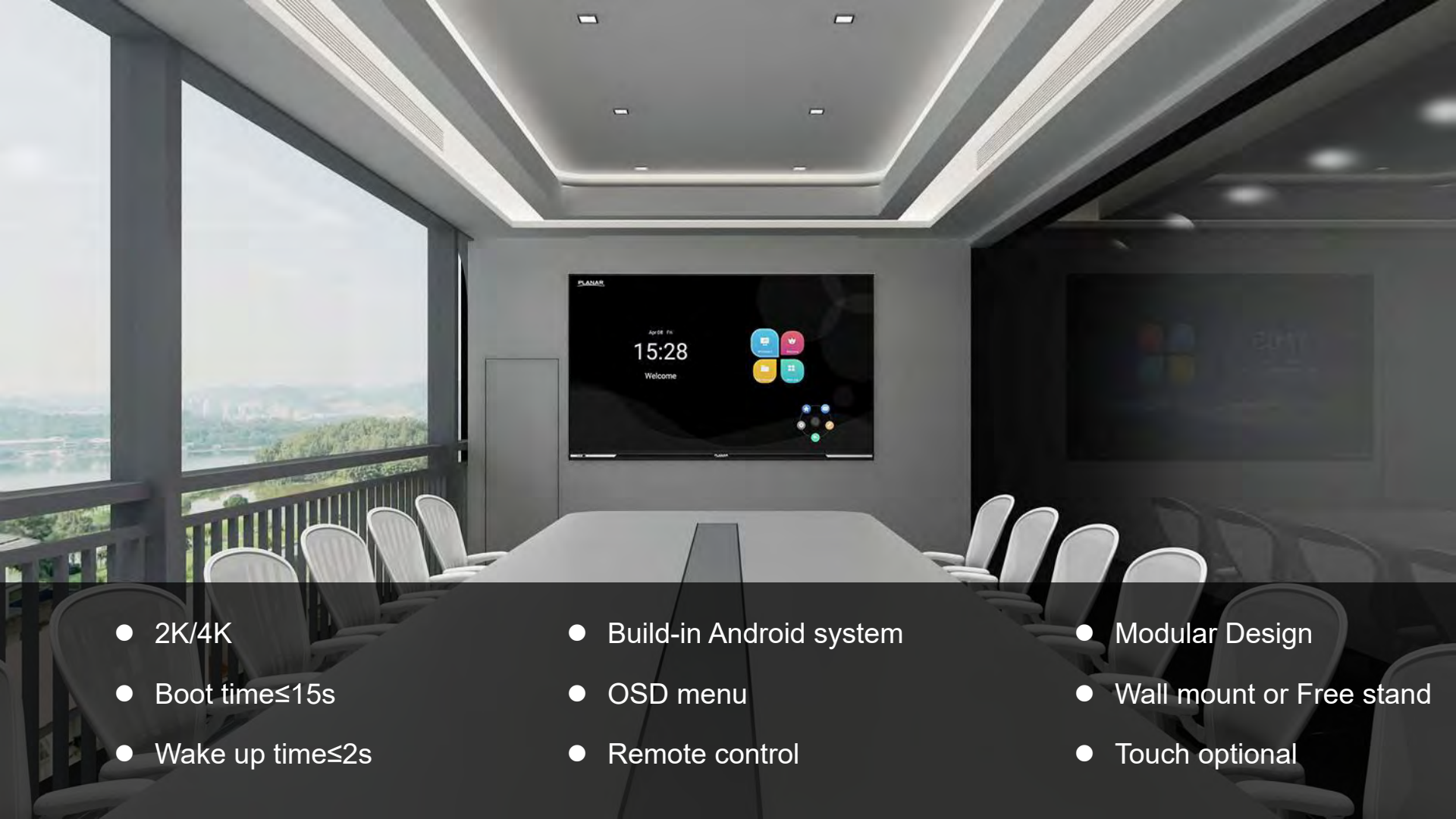
PLANAR[®]



Simple but Extraordinary

- Break the tradition and be customer-oriented
- Highly integrated, rich interface, plug and play
- With operability, interactive characteristics
- The adjustable brightness meets various meeting scenarios





- 2K/4K
- Boot time≤15s
- Wake up time≤2s
- Build-in Android system
- OSD menu
- Remote control
- Modular Design
- Wall mount or Free stand
- Touch optional



USB media
playback



Wireless
Mirroring



Peripheral
camera



Peripheral
MIC



Peripheral
Speaker

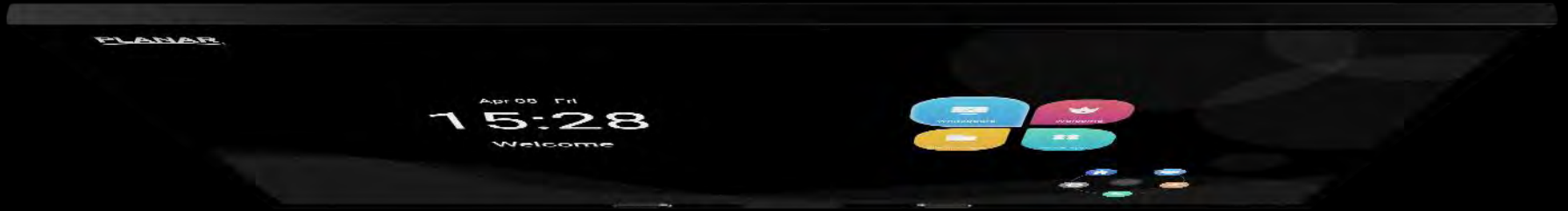


10 points
Touch



Whiteboard
built-in

Simple but Extraordinary



Aspect Ratio

16: 9

Thickness

45mm

Touch

10 points

Maintenance

Front

Switch the screen

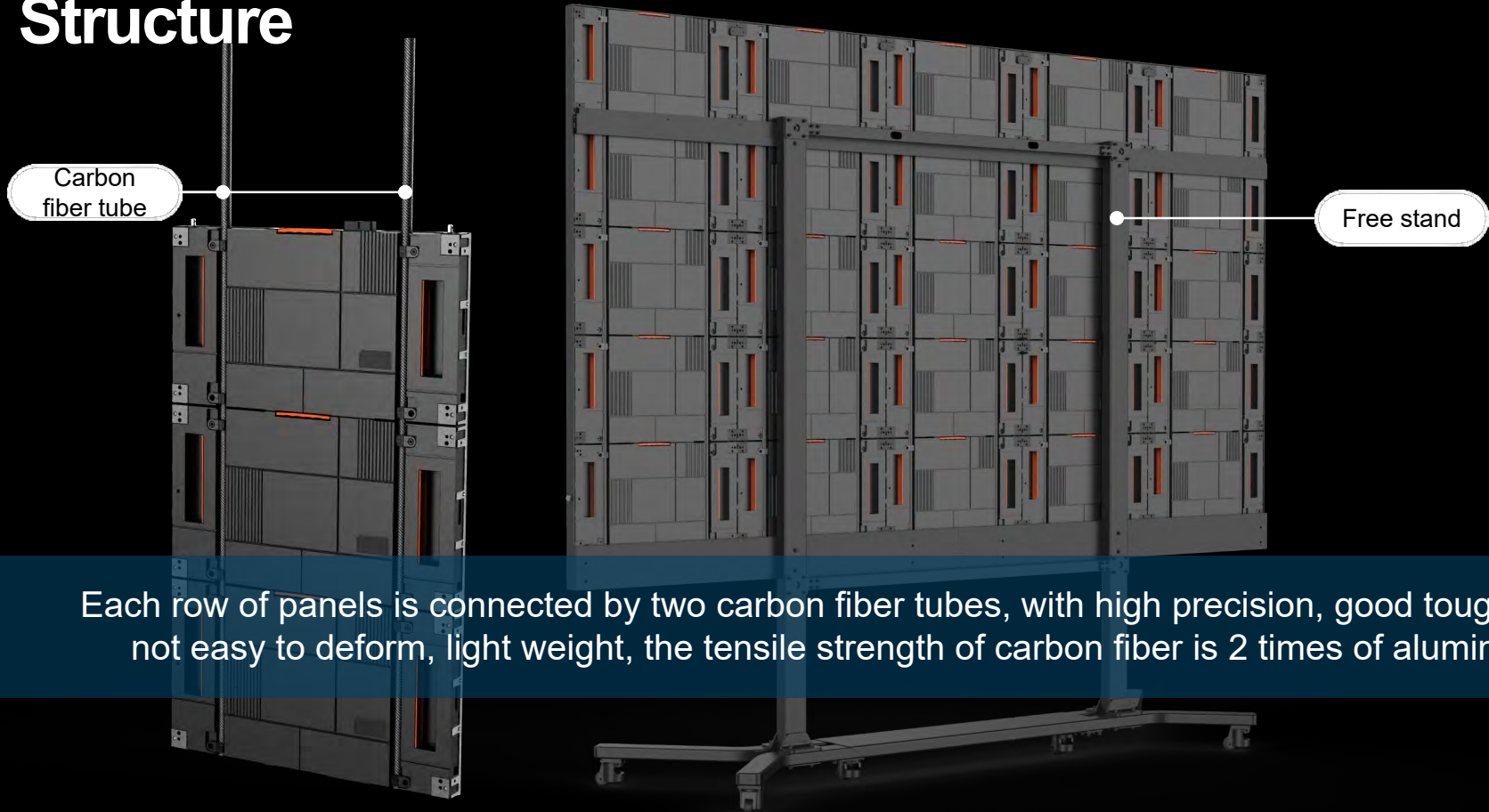
One Button

Power

110V~220V

PLANAR

Structure



Each row of panels is connected by two carbon fiber tubes, with high precision, good toughness, not easy to deform, light weight, the tensile strength of carbon fiber is 2 times of aluminum

Perfect Size and Resolution

Built in sizes and resolutions ready to deploy for:

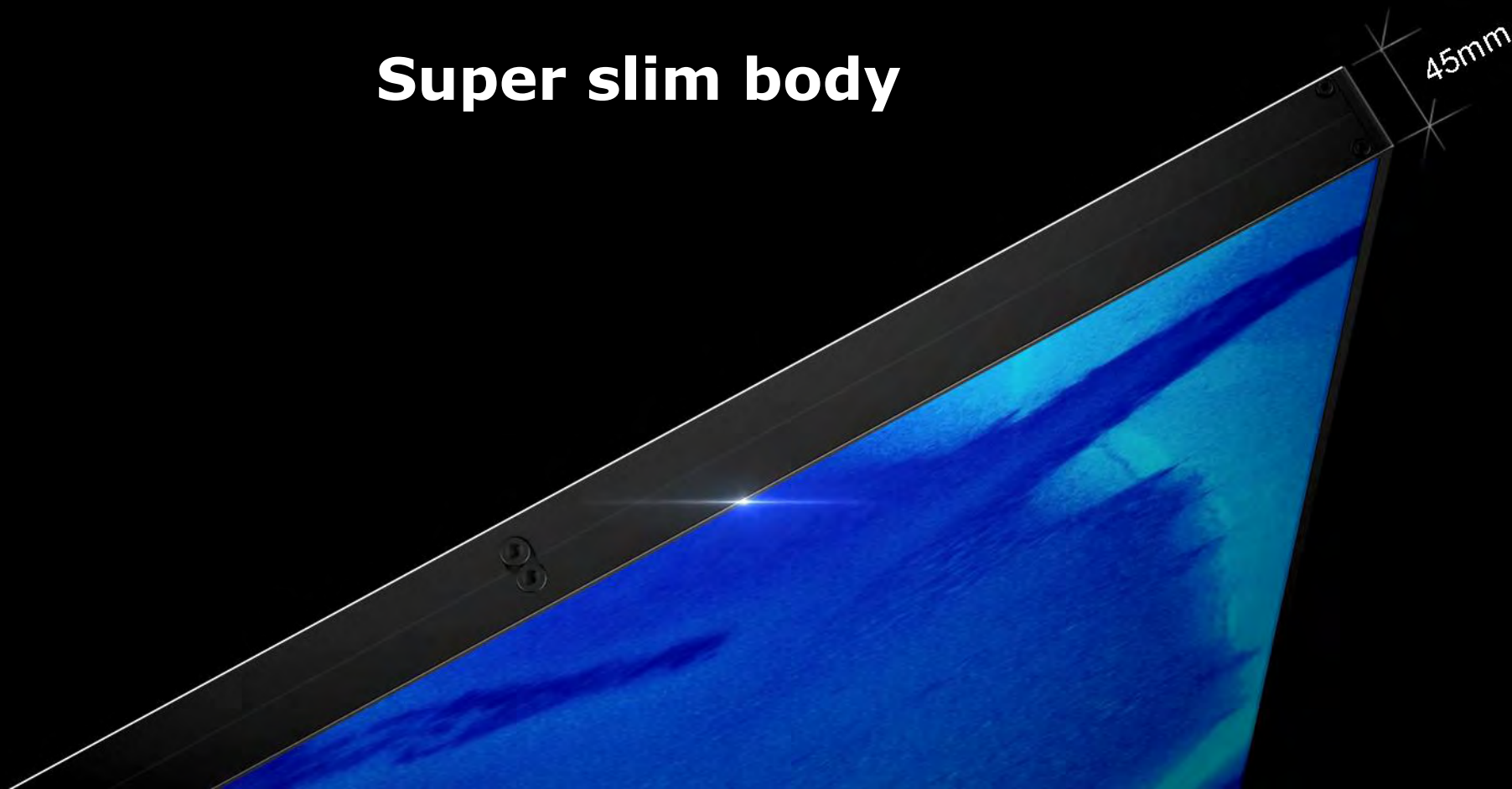
- Conference Rooms
- Education / Training facilities
- Lobbies Displays
- Corporate Boardrooms
- Control rooms
- Any location a large display is used



Diagonal Size	Models				Dimensions (m)
	Full HD 1920 x 1080	Ultra HD 3840 x 2160	Free stand	Touch	
110"	HD 110	-	110	110T	2.42 x 1.36
136"	HD 136	-	136	136T	3.02 x 1.70
165"	HD 165	UHD 165	-	-	3.63 x 2.04
220"	HD 220	UHD 220	-	-	4.84 x 2.72

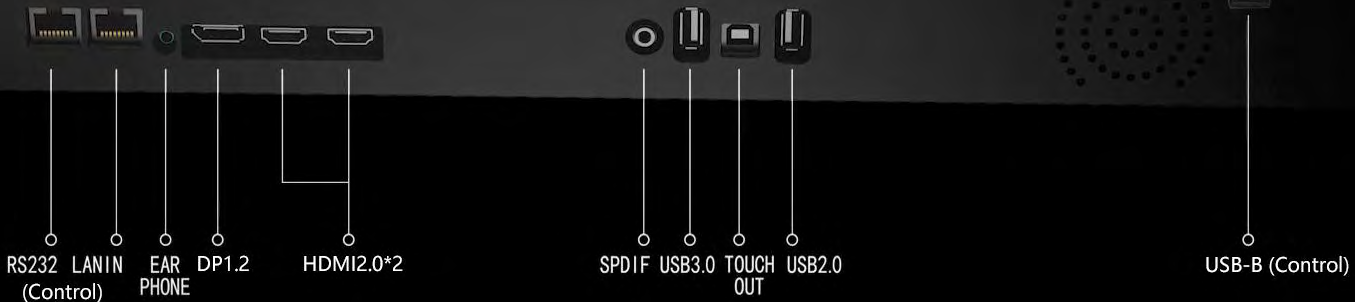
Super slim body

45mm



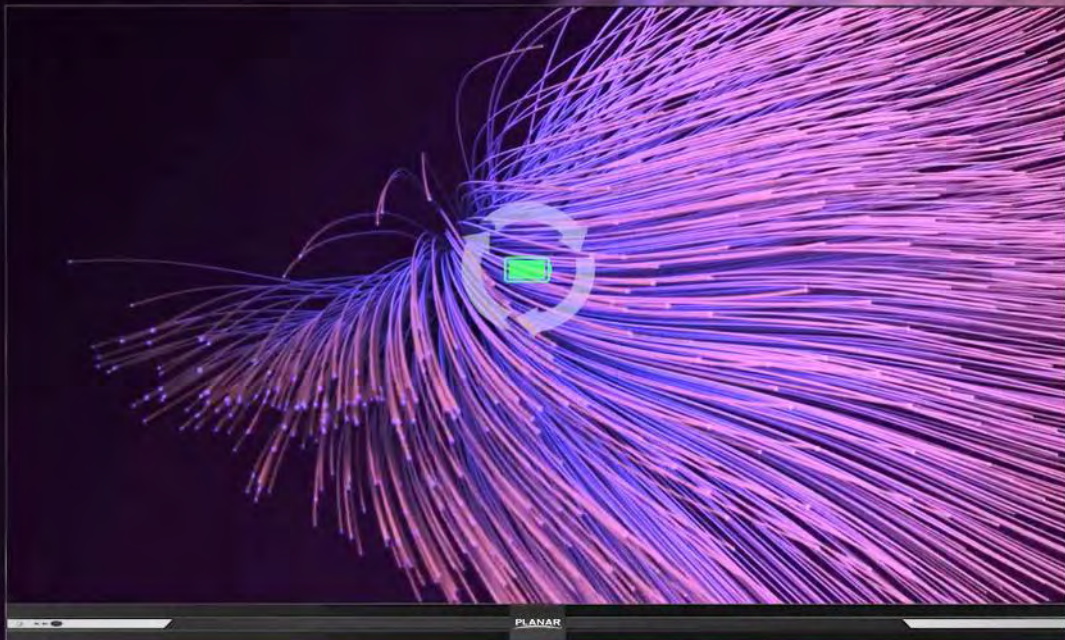
Rich Interfaces

POWER ○
USB ○



Environment Friendly

Standby < 1w, low radiation, energy-saving



Energy-saving and environmentally friendly technology

- ◆ Power Consumption $\leq 800W/2K$
- ◆ Low blue light for eye protection
- ◆ The temperature rise of the environment $\leq 15^{\circ}C$
- ◆ ROHS
- ◆ Class A EMC passed

PLANAR

Remote and OSD

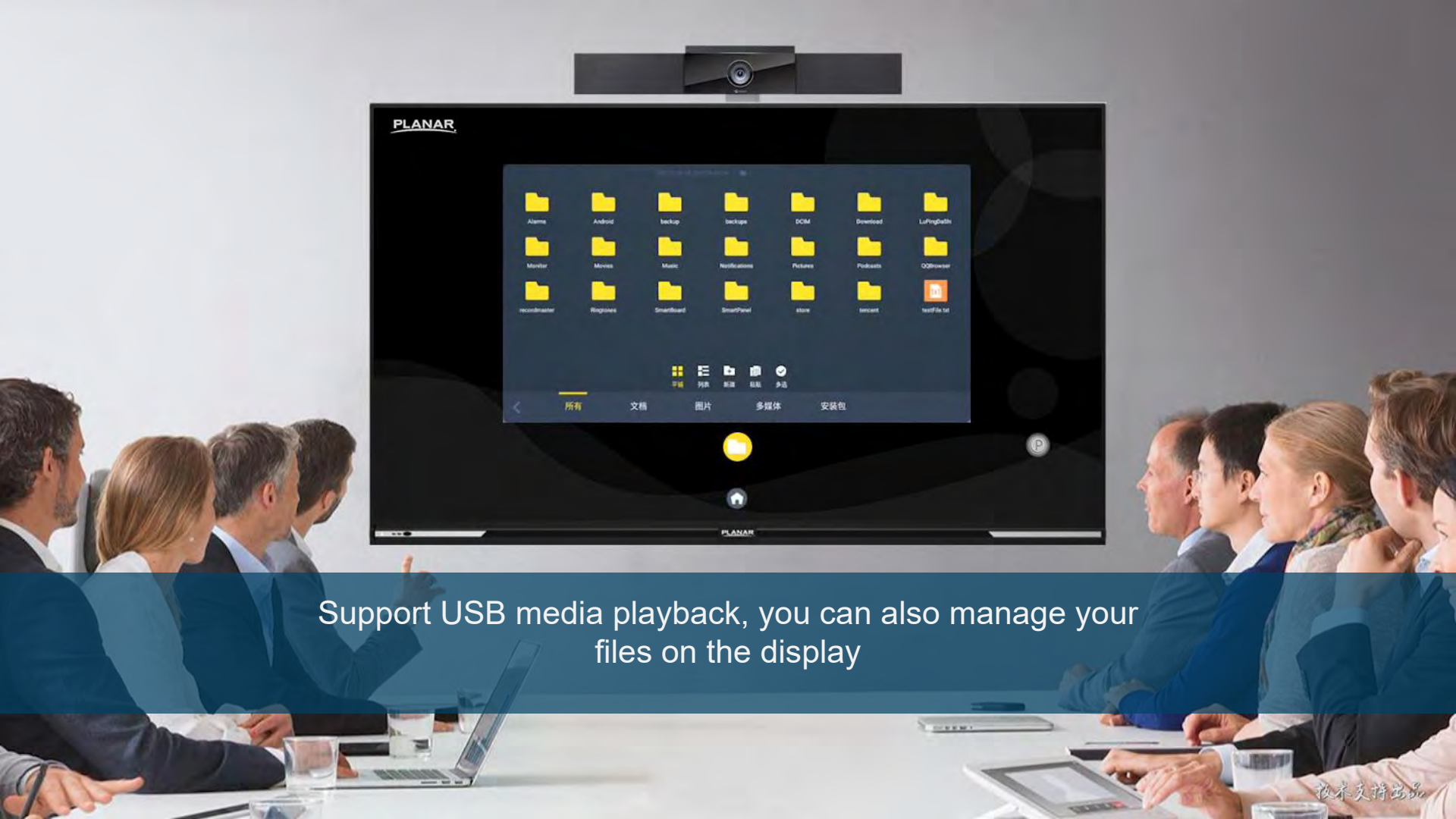
Remote included in the package

- OSD structure
- Allows for simple one-button commands to control the video wall like a single display
 - On/Off
 - Source
 - Brightness
 - Voice





Built-in 10 welcome templates, and you can add any template as you want



Support USB media playback, you can also manage your files on the display



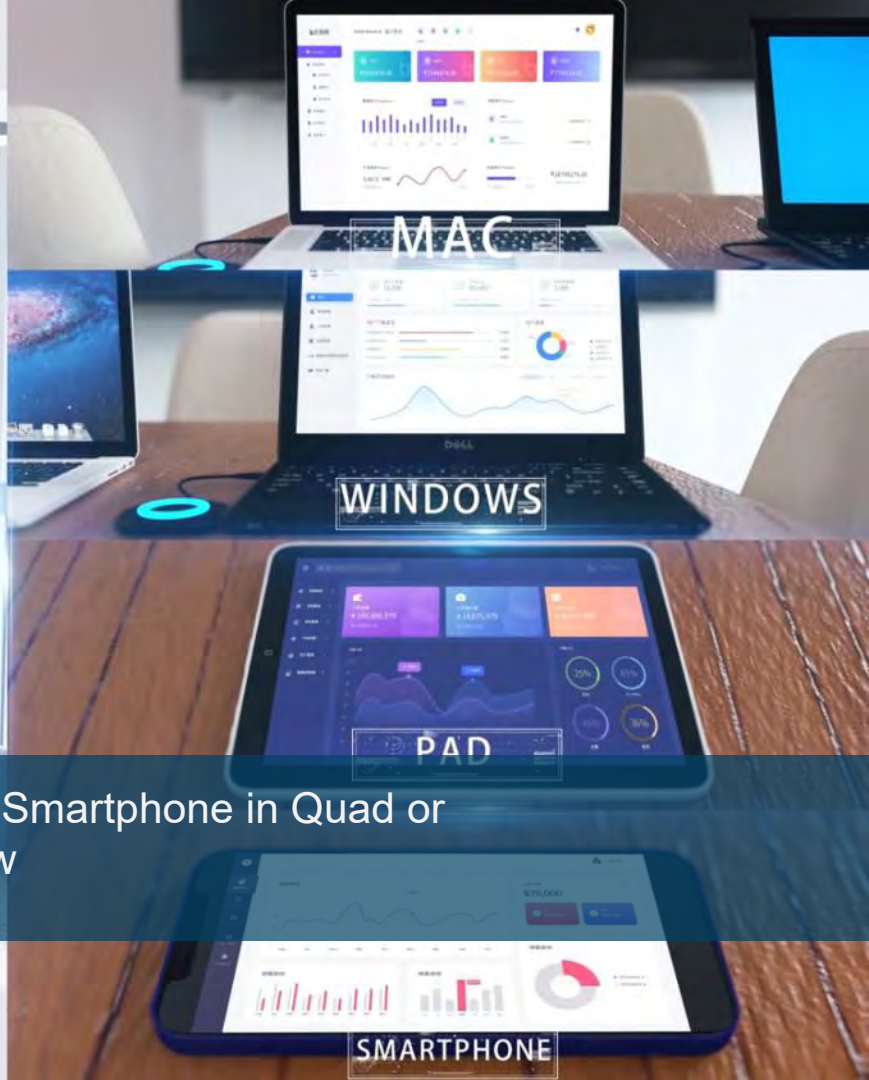
10 points touch, multi writing, remote collaboration



Scan QR Code to download App, or use screen share dongle to fast share your laptop or MAC



Screen mirroring of PC, Pad and Smartphone in Quad or Single view



[Screen Mirroring of PC, PAD and Smartphone in Quad or Single View]



The conference scene supports the interconnection of all terminals, breaking the space restrictions, and providing an immersive conference experience anytime, anywhere

How to choose the iHub size for your boardroom?

Screen Size	Boardroom
110"	20~40m ²
136"	40~60m ²
165"	60~90m ²
220"	90~120m ²

THANK YOU

PLANAR[®]